

**GOLD** fren<sup>®</sup>



**Aircraft**  
wheels and brakes  
catalogue 2019

# 1

## WHEELS WITH BRAKE RIM 001 Part No. 001 6" WHEEL AND BRAKE

### Technical Characteristics

<b>Size</b>	<b>4.00 – 6"</b>
Load max.	1150 kg – 2535 lbs
Static load	425 kg – 930 lbs
6 x screw – torque	10 Nm
Construction Material	CNC Aluminium
Finishing	Colour Anodizing
Weight of the wheel	2450 g
Hardware	Steel
Brake caliper	CP 007
Brake disc	400-522 made from stainless steel
Brake pads	915



### Accessories for GOLDfren wheel and brake + seal (DURAL)

Right side of the wheel with threads / Pravá strana kola – se závity  
*RIM 001-1*

Left side of the wheel with countersink / Levá strana kola – se  
zahluobením pro šrouby  
*RIM 001-3*

Central part of the wheel / Střední díl kola  
*RIM 001-2*

Shaft / Rozpěrka  
*RIM 001-4*

Cap / Čepička  
*RIM 001-5*

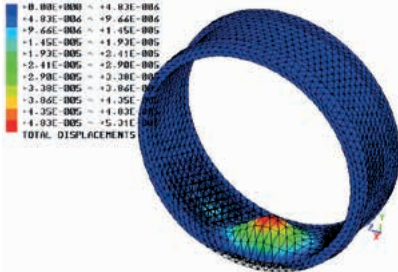
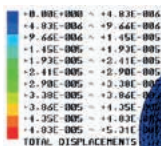
Nut with cotter/ Matice se závlačkou  
*RIM 001-8*

Ball bearings Ø55 x Ø30 / 13 mm TIMKEN / Ložisko  
*L\_6006\_2\_RS*

Lock ring / Pojistný kroužek  
Ø55 mm

Ball bearings Ø47 x Ø25 / 12 mm TIMKEN / Ložisko  
*L\_6005\_2\_RS*

Lock ring / Pojistný kroužek  
Ø47 mm



## Accessories for GOLDfren wheel and brake + seal (DURAL)

Sealing O-ring / Těsnící O-kroužek  
2 x Ø138 x 2,2 mm

Sealing O-ring under the tyre valve screw / Těsnící O-kroužek pod šroub ventilku  
Ø10 x 1.5 mm

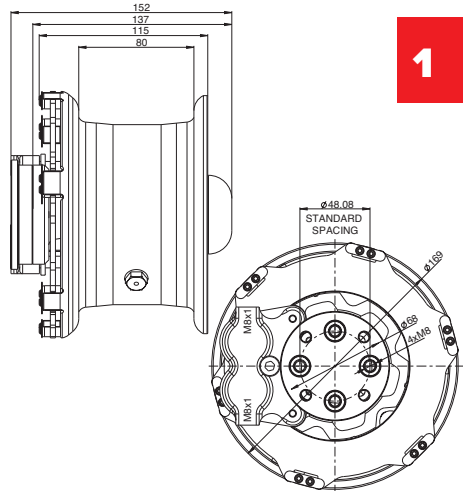
Tyre valve screw with shim / Šroub ventilku s podložkou  
Ø 8.0 x Ø12mm x 1.0  
50-5099

Tyre valve end / Koncovka ventilku  
50-5098

Tyre valve/ Ventilék  
50-5096

Screw / Šroub  
6 x M6

Shim / Podložka  
6 x Ø6 mm



1

**Note:** Our wheels can be anodized in following colours: black, gold, blue, green, orange.

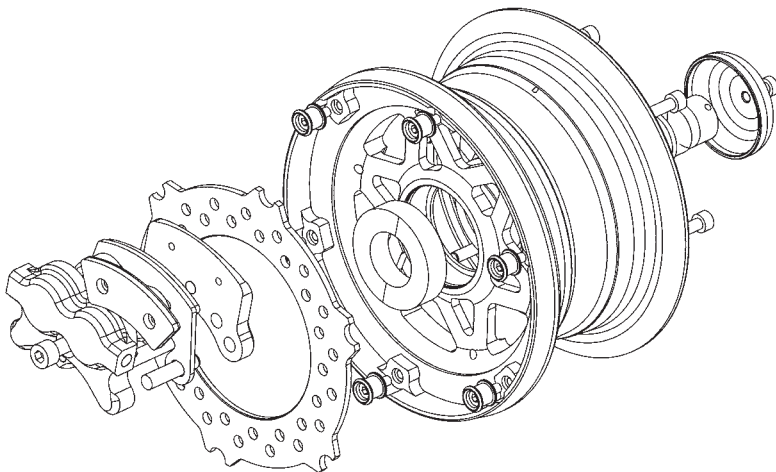
The shaft can be fitted with a centering pin.

Wheel can be fitted with tyres on customer's request.

Main undercarriage wheel 4.00-6" is designed and CNC machined to take utmost account to the balance of weight and brake efficiency. 4" = 101,6 mm

We also produce wheel shaft and brake caliper with our own brake pads to this undercarriage wheel.

Brake system is constructionally solved with brake rotor fitted to the inner side of the rim circumference. The brake system furthermore consists of brake caliper specially designed for this use. Brake system is hydraulic. All parts of this wheel have surface finish and are anodized and galvanized.



## 1 NOSE WHEEL RIM 002 Part No. RIM 002 4" WHEEL

### Technical Characteristics

<b>Size</b>	<b>3.50 – 4"</b>
Load max.	525 kg – 1157 lbs
Static load	185 kg – 407 lbs
5 x screw – torque	6 Nm
Construction Material	CNC Aluminium
Finishing	Colour Anodizing
Weight of the wheel	750 g (without screws)
Hardware	Steel



### Accessories for GOLDfren wheel

Right side of the wheel with threads / Pravá strana kola – se závitý

RIM 002-1

Left side of the wheel with countersink / Levá strana kola – se zhloubením pro šrouby

RIM 002-3

Central part of the wheel / Střední díl kola

RIM 002-2

Shaft / Rozpěrka

RIM 002-4

Ball bearings Ø42 x Ø20 / 12 mm TIMKEN

L 6004 2RS

Lock ring / Pojistný kroužek

Ø42 mm

Ball bearings Ø32 x Ø15 / 9 mm TIMKEN

L 6002 2RS

Lock ring / Pojistný kroužek

Ø32 mm

Screw / Šroub

5 x M5

Shim / Podložka

5 x Ø5 mm

Sealing O-ring / Těsnící O-kroužek

2 x Ø92 x 2 mm

Sealing O-ring under the tyre valve screw / Těsnící O-kroužek pod šroub ventilku

Ø10 x 1.5 mm

Tyre valve screw with shim / šroub ventilku s podložkou

50-5099

Tyre valve end / Koncovka ventilku

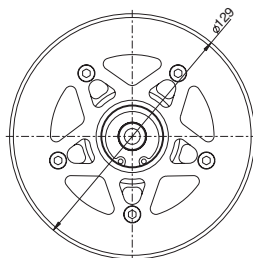
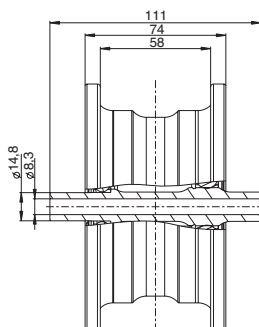
50-5097

Tyre valve/ Ventilek

50-5096

Lock ring / Pojistný kroužek

Ø20 mm



**Note: Our wheels can be anodized in following colours: black, gold, blue, green, orange**

**Wheel can be fitted with tyres on customer's request.**

**NOSE WHEEL**

**RIM 003**

**Part No. RIM 003**

**Offset wheel for Dynamic/ Kolo s mimo osovým uložením pro letadlo Dynamic**

**Technical Characteristics**

<b>Size</b>	<b>4.00 – 6"</b>
Load max.	1150 kg – 2535 lbs
Static load	425 kg – 930 lbs
6 x screw – torque	10 Nm
Construction	CNC Aluminium
Material	
Finishing	Colour Anodizing
Weight of the wheel	1.55 kg ( with screws)
Hardware	Steel



**Accessories for GOLDfren wheel**

Right side of the wheel with „offset“ / Pravá strana kola „vyosená“

RIM 003-1

Left side of the wheel / Levá strana kola

RIM 001-3

Central part of the wheel / Střední díl kola

RIM 001-2

Shaft / Rozpěrka

RIM 003-4

Ball bearings Ø47 x Ø25 / 12 mm TIMKEN / Ložisko

2 x L\_6005\_2RS

Lock ring / Pojistný kroužek

2 x Ø 47 mm

Screw with shim / Šroub s podložkou

6 x M6 x 85

Nut / Matic

6 x M6

Sealing O-ring / Těsnící O-kroužek

2 x Ø138 x 2,2 mm

Sealing O-ring under the tyre valve screw / Těsnící O-kroužek pod šroub ventilku

Ø10 x 1.5 mm

Tyre valve screw with shim / Šroub ventilku s podložkou

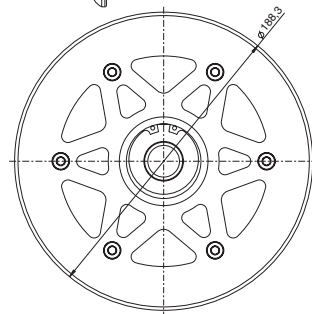
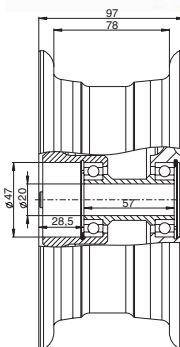
50-5099

Tyre valve end / Koncovka ventilku

50-5098

Tyre valve/ Ventilek

50-5096



**Note: Our wheels can be anodized in following colours: black, gold, blue, green, orange**

**Wheel can be fitted with tyres on customer´s request.**

**(for retractable gear only)**

## 1 NOSE WHEEL RIM 004 Part No. RIM 004 6" WHEEL

### Technical Characteristics

<b>Size</b>	<b>4.00 – 6"</b>
Load max.	1150 kg – 2535 lbs
Static load	425 kg – 930 lbs
6 x screw – torque	10 Nm
Construction	CNC Aluminium
Material	
Finishing	Colour Anodizing
Weight of the wheel	1.60 kg ( without screws)
Hardware	Steel

### Accessories for GOLDfren wheel

Right and left side of the wheel / Pravá a levá strana kola  
2 x RIM 001-3

Spacer fitting / Koncovka rozpěrky  
2 x RIM 004-3

Central part of the wheel / Střední díl kola  
RIM 004-1

Shaft / Rozpěrka  
RIM 004-2

Ball bearings  $\varnothing 47 \times \varnothing 25 / 12$  mm TIMKEN / Ložisko  
2 x L\_6005\_2RS

Lock ring / Pojistný kroužek  
2 x  $\varnothing 47$  mm

Screw with shim / Šroub s podložkou  
6 x M6 x 90

Nut / Matice  
6 x M6

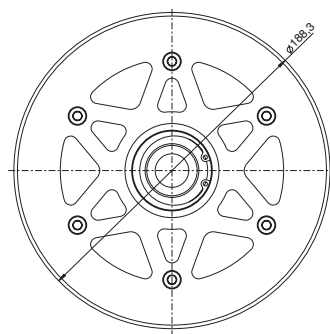
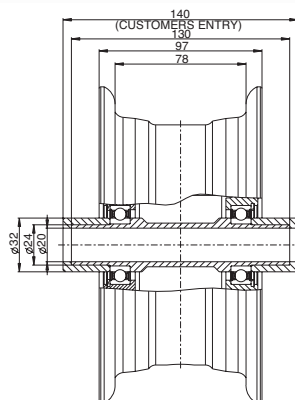
Sealing O-ring / Těsnící O-kroužek  
2 x  $\varnothing 138 \times 2,2$  mm

Sealing O-ring under the tyre valve screw / Těsnící O-kroužek pod šroub ventilku  
 $\varnothing 10 \times 1.5$  mm

Tyre valve screw with shim / Šroub ventilku s podložkou  
50-5099

Tyre valve end / Koncovka ventilku  
50-5098

Tyre valve/Ventilek  
50-5096



**Note: Our wheels can be anodized in following colours: black, gold, blue, green, orange**

**Wheel can be fitted with tyres on customer's request.**

## WHEEL WITH BRAKE RIM 005 Part No. 005 6" WHEEL AND BRAKE

### Technical Characteristics

<b>Size</b>	<b>5.00 – 6"</b>
Load max.	1150 kg – 2535 lbs
Static load	425 kg – 930 lbs
6 x screw – torque	10 Nm
Construction Material	CNC Aluminium
Finishing	Colour Anodizing
Weight of the wheel	
Hardware	Steel
Brake caliper	CP 007
Brake disc	400-522 made from stainless steel
Brake pads	915



1

### Accessories for GOLDfren wheel and brake

Right side of the wheel with threads / Pravá strana kola – se závitý  
RIM 001-1

Left side of the wheel with countersink / Levá strana kola – se  
zahlobením pro šrouby  
RIM 001-3

Central part of the wheel / Střední díl kola  
RIM 005-2

Shaft / Rozpěrka  
RIM 005-4

Cap / Čepička  
RIM 001-5

Nut with cotter/ Matice se závlačkou  
RIM 001-8

Ball bearings Ø55 x Ø30 / 13 mm TIMKEN / Ložisko  
L\_6006\_2RS

Lock ring / Pojistný kroužek  
Ø55 mm

Ball bearings Ø47 x Ø25 / 12 mm TIMKEN / Ložisko  
L\_6005\_2RS

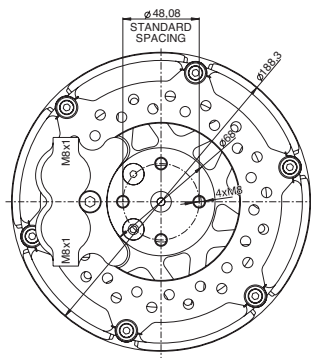
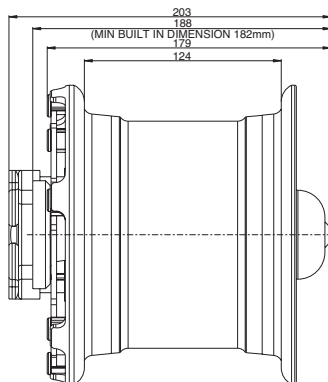
Lock ring / Pojistný kroužek  
Ø47 mm

Sealing O-ring / Těsnící O-kroužek  
2 x Ø138 x 2,2 mm

Sealing O-ring under the tyre valve screw / Těsnící O-kroužek pod  
šroub ventilku  
Ø10 x 1.5 mm

Screw / Šroub  
6 x M6 x 120 mm

Shim / Podložka  
6 x Ø6 mm



5" = 127 mm

**1**

**Note:** Rim with tyre size 15x6.00-6"

**Our wheels can be anodized in following colours: black, gold, blue, green, orange**

**The shaft can be fitted with a centering pin.**

**Wheel can be fitted with tyres on customer's request.**

Main undercarriage wheel 6.00-6" is designed and CNC machined to take utmost account to the balance of weight and brake efficiency.

We also produce wheel shaft and brake caliper with our own brake pads to this undercarriage wheel.

Brake system is constructionally solved with brake rotor fitted to the inner side of the rim circumference. The brake system furthermore consists of brake caliper specially designed for this use. Brake system is hydraulic. All parts of this wheel have surface finish and are anodized and galvanized.





## NOSE WHEEL

### RIM 006

Part No. RIM 006

### 6" WHEEL

Part No. RIM 003



### Technical Characteristics

Size	5.00 – 6"
Load max.	1150 kg – 2535 lbs
Static load	425 kg – 930 lbs
6 x screw – torque	10 Nm
Construction	CNC Aluminium
Material	
Finishing	Colour Anodizing
Weight of the wheel	(without screws)
Hardware	Steel

### Accessories for GOLDfren wheel

Right and left side of the wheel / Pravá a levá strana kola

2 x RIM 001-3

Spacer fitting / Koncovka rozpěrky

2 x RIM 006-3

Central part of the wheel / Střední díl kola

RIM 006-1

Shaft / Rozpěrka

RIM 006-2

Ball bearings Ø47 x Ø25 / 12 mm TIMKEN / Ložisko

2 x L\_6005\_2RS

Lock ring / Pojistný kroužek

2 x Ø 47 mm

Screw with shim / Šroub s podložkou

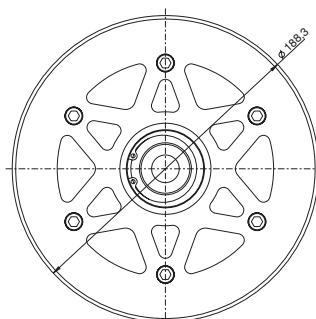
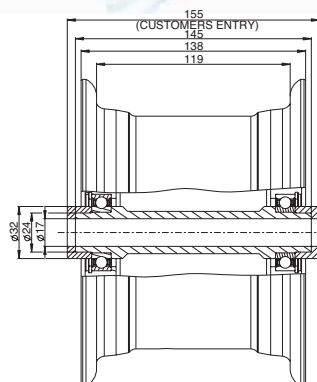
6 x M6 x 130 mm

Nut / Matice

6 x M6

Sealing O-ring / Těsnící O-kroužek

2 x Ø138 x 2,2 mm



**Note:** Rim with tyre of size 15x6.00-6"

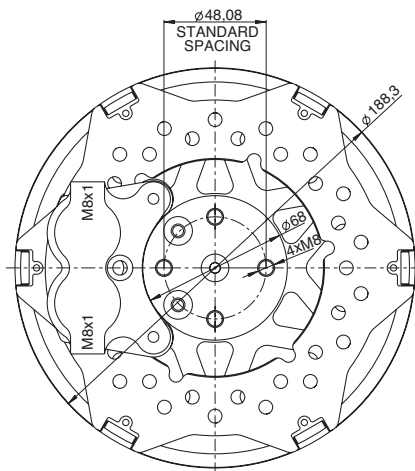
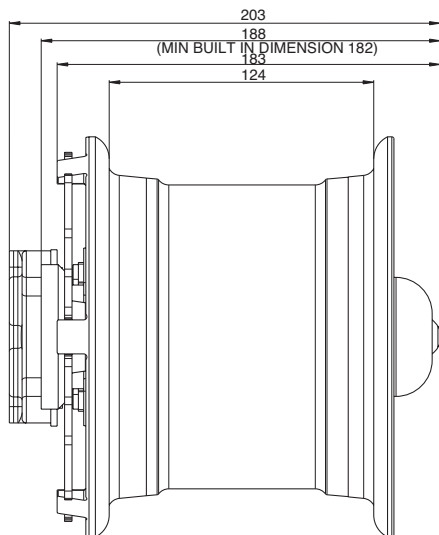
**Note:** Our wheels can be anodized in following colours: black, gold, blue, green, orange

Wheel can be fitted with tyres on customer's request.

**1 WHEEL WITH BRAKE  
RIM 007  
Part No. 007  
6" WHEEL AND BRAKE**

**Technical Characteristics**

<b>Size</b>	<b>5.00 – 6"</b>
Load max.	1150 kg – 2535 lbs
Static load	425 kg – 930 lbs
6 x screw – torque	10 Nm
Construction	CNC Aluminium
Material	
Finishing	Colour Anodizing
Weight of the wheel	1125 g
Hardware	Steel
Brake caliper	CP 014
Brake disc	400-527 made from stainless steel
Brake pads	955



**Note: Our wheels can be anodized in following colours: black, gold, blue.**

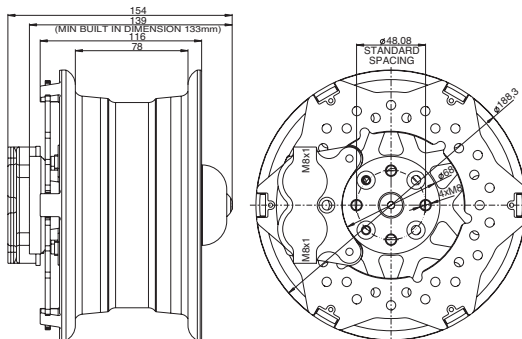
**The shaft can be fitted with a centering pin.**

**Wheel can be fitted with tyres on customer's request.**

## WHEEL WITH BRAKE RIM 008 Part No. 008 6" WHEEL AND BRAKE

### Technical Characteristics

<b>Size</b>	<b>4.00 – 6"</b>
Load max.	1150 kg – 2535 lbs
Static load	425 kg – 930 lbs
6 x screw – torque	10 Nm
Construction	CNC Aluminium
Material	
Finishing	Colour Anodizing
Weight of the wheel	2360 g
Hardware	Steel
Brake caliper	CP 014
Brake disc	400-527 made from stainless steel
Brake pads	955



### Accessories for GOLDfren wheel and brake

Right side of the wheel with threads / Pravá strana kola – se závit

RIM 008-1

Left side of the wheel with countersink / Levá strana kola – se zahloubením pro šrouby

RIM 001-3

Central part of the wheel / Střední díl kola

RIM 001-2

Shaft / Rozpěrka

RIM 001-4

Cap / Čepička

RIM 001-5

Nut with cotter/ Matice se závlačkou

RIM 001-8

Ball bearings Ø55 x Ø30 / 13 mm TIMKEN / Ložisko

L\_6006\_2 RS

Lock ring / Pojistný kroužek

Ø 55 mm

Ball bearings Ø47 x Ø25 / 12 mm TIMKEN / Ložisko

L\_6005\_2 RS

### Accessories for GOLDfren wheel and brake

Lock ring / Pojistný kroužek

Ø 47 mm

Sealing O-ring / Těsnící O-kroužek

2 x Ø138 x 2,2 mm

Sealing O-ring under the tyre valve screw / Těsnící

O-kroužek pod šroub ventilku

Ø10 x 1.5 mm

Tyre valve screw with shim / Šroub ventilku s podložkou

Ø08.0 x Ø12mm x1.0

50-5099

Tyre valve end / Koncovka ventilku

50-5098

Tyre valve/ Ventilék

50-5096

Screw / Šroub

6 x M6

Shim / Podložka

6 x Ø6 mm

**Note: Our wheels can be anodized in following colours: black, gold, blue, green, orange**

**The shaft can be fitted with a centering pin.**

**Wheel can be fitted with tyres on customer's request.**

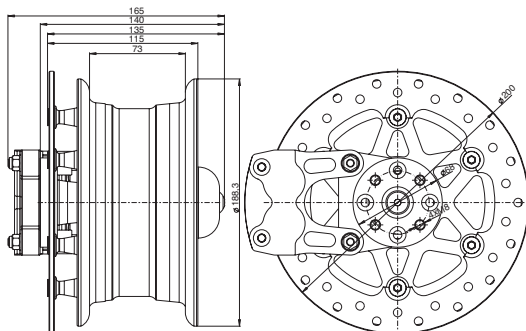
**Exchange of the brake lining is possible without disassembling the brake wheel.**

# 1

## Wheel with Brake RIM 009 Part No. 009 6" WHEEL AND BRAKE

### Technical Characteristics

Size	4.00 – 6"
Load max.	1150 kg – 2535 lbs
Static load	425 kg – 930 lbs
6 x screw – torque	10 Nm
Construction	CNC Aluminium
Material	
Finishing	Colour Anodizing
Weight of the wheel	2490 g
Hardware	Steel
Brake caliper	CP 015
Brake disc	400-526 made from stainless steel
Brake pads	919 + 918



### Accessories for GOLDfren wheel and brake

Right side of the wheel with threads / Pravá strana kola – se závitů

RIM 009-1

Left side of the wheel with countersink / Levá strana kola – se zahloubením pro šrouby

RIM 001-3

Central part of the wheel / Střední díl kola

RIM 001-2

Shaft / Rozpěrka

RIM 001-4

Cap / Čepička

RIM 001-5

Nut with cotter/ Matice se závlačkou

RIM 001-8

Ball bearings Ø55 x Ø30 / 13 mm TIMKEN / Ložisko L\_6006\_2\_RS

Lock ring / Pojistný kroužek

Ø 55 mm

Ball bearings Ø47 x Ø25 / 12 mm TIMKEN / Ložisko

L\_6005\_2\_RS

### Accessories for GOLDfren wheel and brake

Lock ring / Pojistný kroužek

Ø 47 mm

Sealing O-ring / Těsnící O-kroužek

2 x Ø138 x 2,2 mm

Sealing O-ring under the tyre valve screw / Těsnící O-kroužek pod šroub ventilku

Ø10 x 1,5 mm

Tyre valve screw with shim / Šroub ventilku s podložkou

Ø08.0 x Ø12mm x 1.0

50-5099

Tyre valve end / Koncovka ventilku

50-5098

Tyre valve/ Ventilék

50-5096

Screw / Šroub

6 x M6

Shim / Podložka

6 x Ø6 mm

**Note: Our wheels can be anodized in following colours: black, gold, blue, green, orange**

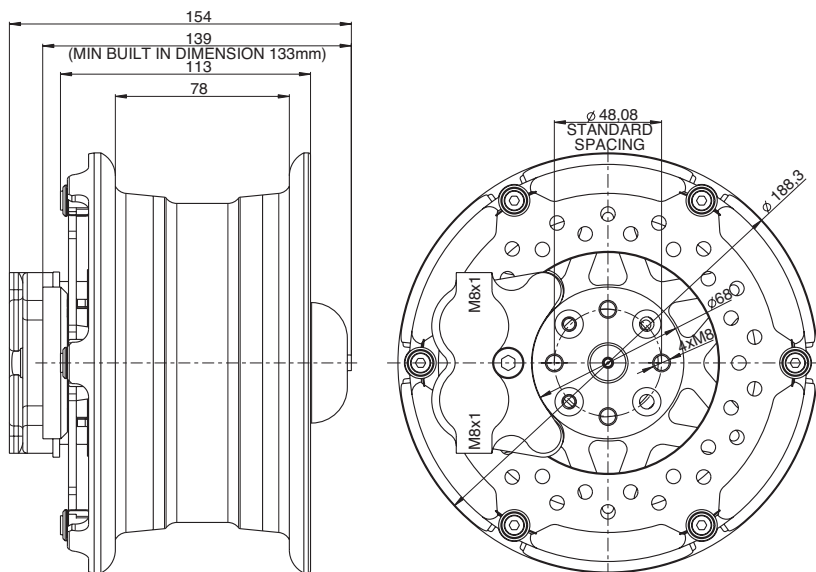
**The shaft can be fitted with a centering pin.**

**Wheel can be fitted with tyres on customer's request.**

**WHEEL WITH BRAKE  
RIM 010  
Part No. 010  
6" WHEEL AND BRAKE**

**Technical Characteristics**

<b>Size</b>	<b>4.00 – 5"</b>
Load max.	1150 kg – 2325 lbs
Static load	425 kg – 930 lbs
6 x screw – torque	10 Nm
Construction	CNC Aluminium
Material	
Finishing	Colour Anodizing
Weight of the wheel	2025 g
Hardware	Steel
Brake caliper	CP 014
Brake disc	400-528 made from stainless steel
Brake pads	915



**Note: Our wheels can be anodized in following colours: black, gold, blue.**

**The shaft can be fitted with a centering pin.**

**Wheel can be fitted with tyres on customer's request.**

**2**

**Aircraft  
UL Caliper  
CP 007 for GOLDfren wheels  
Part No. 70-03-CP007**

**Technical Characteristics**

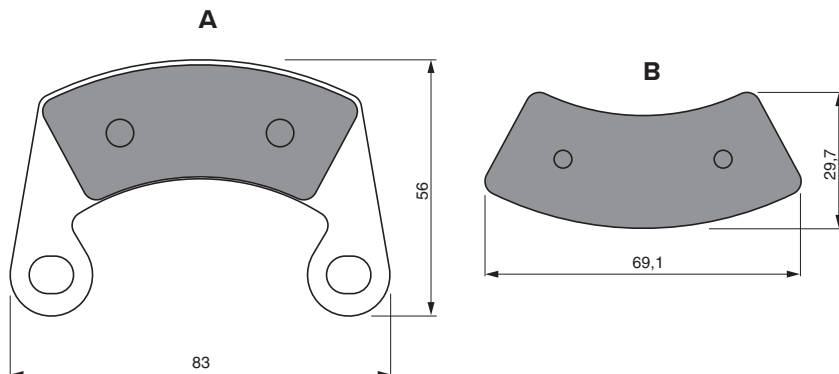
Pistons ø	2 x 25,3 mm
Construction Material	CNC Aluminium
Finishing	Colour Anodizing
Brake Fluid	DOT.4
Max.pressure	65 bar / 942 psi
Hardware	Steel
Pistons	Stainless steel
Brake pads	Type 915



**Accessories for GF caliper**

Bleeding screw / Odvzdušňovací šroub M 8 x 1
Bleeding screw cover / Čepička odvdz. šroubu 90-50011
O-ring for piston / O-kroužek pro pístek ø 25 mm 2 x 90-50004
Screw / Šroub M 8 x 35
Pin/ Čep-kolík 2 x 90-15-5030

**Note: Our calipers can be anodized in following colours: black, gold, blue, green, orange**



## Aircraft UL Caliper CP 008

**Part No. 70-03-CP008**

### Technical Characteristics

Piston ø	25,3 mm
Construction Material	CNC Aluminium
Finishing	Colour Anodizing
Weight (without pads)	170,5 g
Brake Fluid	DOT.4
Max. pressure	60 bar / 870 psi
Hardware	Steel
Pistons	Stainless steel
Brake pads	Type 900



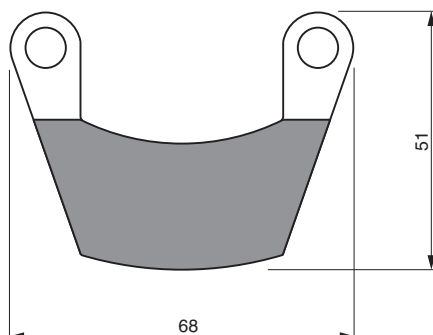
### Accessories for GF caliper

Bleeding screw / Odvzdušňovací šroub  
M 8 x 1

Bleeding screw cover / Čepička odvzd. šroubu  
90-50011

O-ring for piston / O-kroužek pro pístek ø 25 mm  
90-50004

**Note: Our calipers can be anodized in following colours : black, gold, blue, green, orange**



## 2

### Aircraft UL Caliper CP 009 Part No. 70-03-CP009



#### Technical Characteristics

Piston ø	25,3 mm
Construction Material	CNC Aluminium
Finishing	Colour Anodizing
Weight (without pads)	175 g
Brake Fluid	DOT.4
Max. pressure	60 bar / 870 psi
Hardware	Steel
Pistons	Stainless steel
Brake pads	Type 900

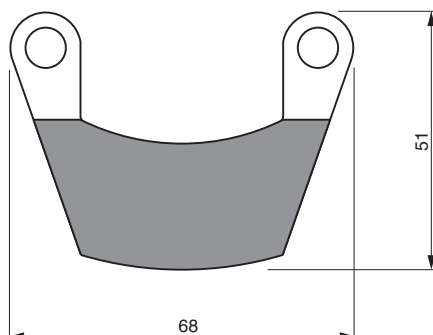
#### Accessories for GF caliper

Bleeding screw / Odvzdušňovací šroub  
M 8 x 1

Bleeding screw cover / Čepička odvzd. šroubu  
90-50011

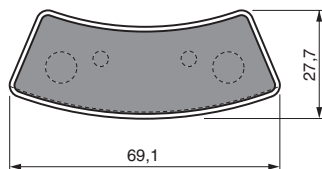
O-ring for piston / O-kroužek pro pístek ø 25 mm  
90-50004

**Note: Our calipers can be anodized in following colours: black, gold, blue, green, orange**





**Aircraft Caliper CP 010**  
**Part No. 70-03-CP010**



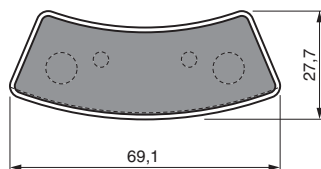
**2**

**Technical Characteristics**

Pistons ø	2 x 44,3 mm
Construction Material	CNC Aluminium
Finishing	Hard Anodizing
Weight (without pads)	750 g
Brake Fluid	DOT.4
Max. pressure	
Hardware	Steel
Pistons	Stainless steel
Brake pads	GF919_066-06200
Thread	3/8-24 UNF or 1/8 NPT



**Aircraft Caliper CP 011**  
**Part No. 70-03-CP011**



**Technical Characteristics**

Piston ø	50,7 mm
Construction Material	CNC Aluminium
Finishing	Hard Anodizing
Weight (without pads)	500 g
Brake Fluid	DOT.4
Max. pressure	
Hardware	Steel
Pistons	Stainless steel
Brake pads	GF919_066-06200



**Calipers**

### Axles

#### Technical Characteristics

Dimensions of axles fittings are stated in mm	Druhy uchycení os jsou uvedeny v milimetrech.
Axles are made from special duralumin	Osy jsou vyrobeny ze speciálního duralu.
Surface treatment: Anodising	Povrchová úprava: eloxováním
Other fitments are made on demand	Jiná provedení uchycení je možné na objednávku.
There are various types of axles available: <ul style="list-style-type: none"> <li>for wheel fork that is fitted on both ends</li> <li>for cantilever mounting</li> </ul>	K dispozici jsou různé typy os: <ul style="list-style-type: none"> <li>Pro vidlici kola, která je uchycena z obou stran</li> <li>Pro konzolovou instalaci</li> </ul>



Suitable for e.g. RIM 005 (for undercarriage wheel)



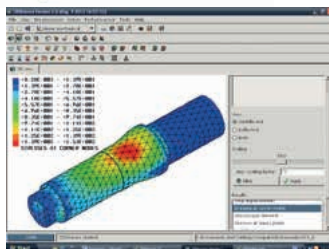
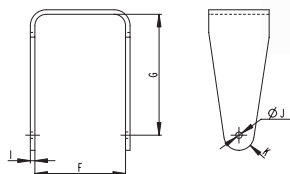
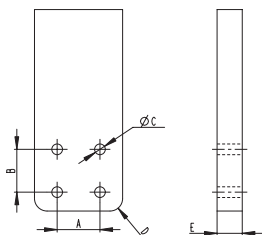
Suitable for e.g. RIM 001 (for undercarriage wheel)



Suitable for e.g. RIM 002, RIM 004 (for nose wheel)

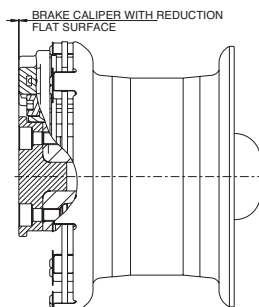
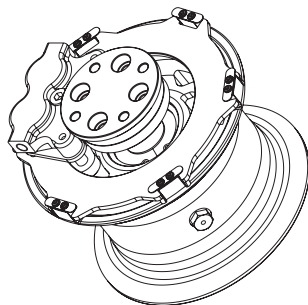
#### Undercarriage axles – shafts:

#### Nose wheel axles:



#### SPACER

Part No. SP001-29



**Master cylinder**

**BC 001**

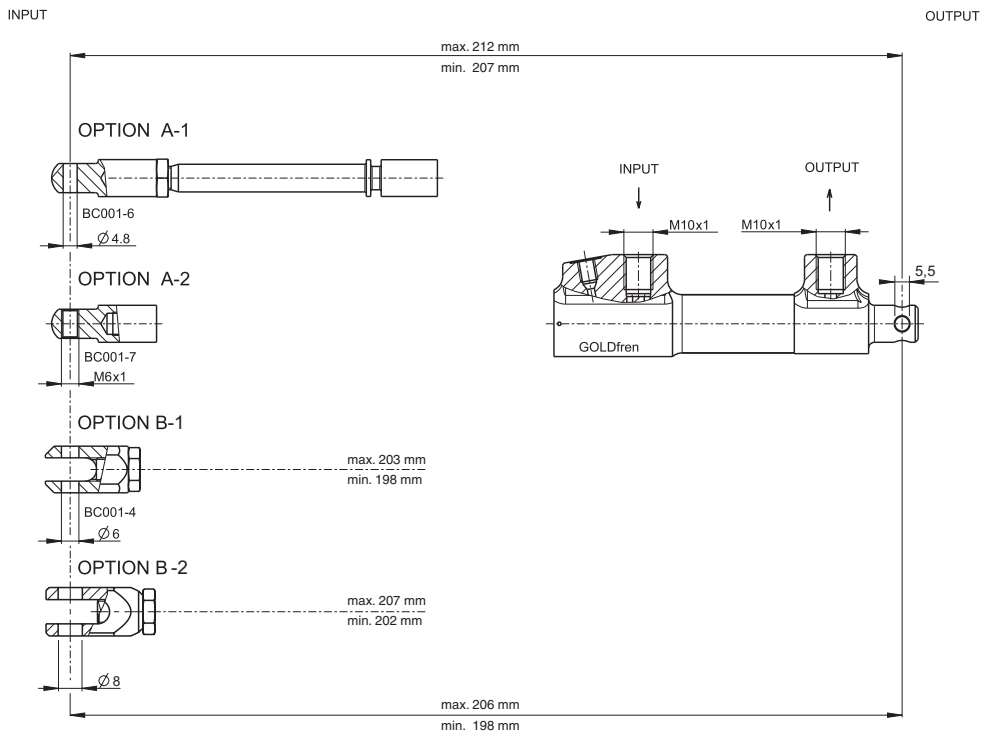
**Part No. BC 001-A-1**

**Part No. BC 001-A-2**

**Part No. BC 001-B-1**

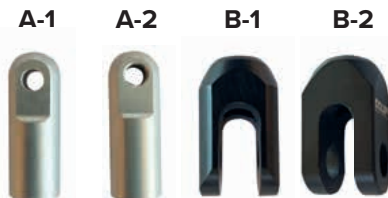
**Part No. BC 001-B-2**

BC 001



**Technical Characteristics**

Construction Material	CNC Aluminium
Brake Fluid	DOT.4 or MIL
Finishing	Colour Anodizing
Weight of the cylinder	177 g (without screws)
Hardware	Steel
Max pressure	



### Accessories for GOLDfren master cylinder BC 001

Master cylinder body / Těleso pumpy

BC 001-1

Piston / Píst

BC 001-2

Master cylinder plug / Zátka pumpy

BC 001-3

Spring / Pružina

BC 001-5

Piston cup / Manžeta Øx 12,5 mm

2x 90-50008

Bleeding screw / Odvzdušňovací šroub M6

50-5042

Screw / Šroub M10x1

2 x 50-5008

Lock ring / Pojistný kroužek

Ø 17 mm

Sealing O-ring / Těsnící O-kroužek

Øx 13 x 2,5 mm

Sealing O-ring / Těsnící O-kroužek

Øx 10 x 1,78 mm

Nut / Matice

BC 001-4-5095

Pin / Čep 8 mm

BC 001-4-820008

Cotter / Závlačka

BC 001-4-830015

Shim / Podložka

BC 001-4-5094



- GOLDfren master cylinder is made from materials of premium quality
- High efficiency is ensured with 3/8 piston
- Using DUO piston cups
- Master cylinder can replace any competition master cylinder used in General Aviation
- It is possible to fit GOLDfren master cylinder in any position (the only limiting factor is the supply to the reservoir)
- Compatible with mineral hydraulic brake fluid (MIL) or with DOT.4 automotive brake fluid that is used in ultralight aircrafts and it is also commonly used in automotive industry
- **ATTENTION!** Each brake fluid requires sealing materials and these mustn't be mixed up! It is essential to specify brake fluid type while placing the order.

**Master cylinder  
BC 002**

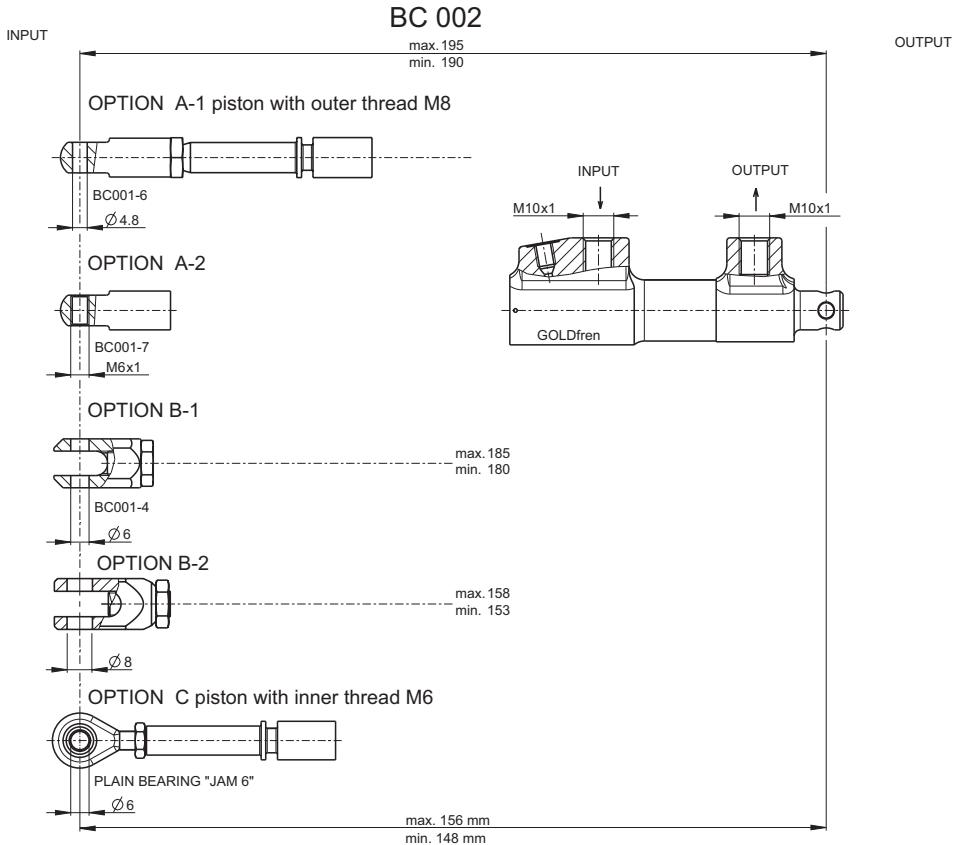
**Part No. BC 002-A-1**

**Part No. BC 002-A-2**

**Part No. BC 002-B-1**

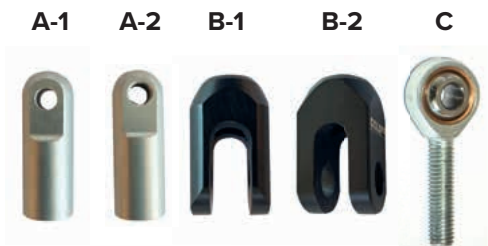
**Part No. BC 002-B-2**

**Part No. BC 002-C**



**Technical Characteristics**

Construction Material	CNC Aluminium
Brake Fluid	DOT.4 or MIL
Finishing	Colour Anodizing
Weight of the cylinder	165 g (with pin)
Hardware	Steel
Max pressure	



**Master cylinders**

## 4

### Accessories for GOLDfren master cylinder BC 002

Master cylinder body / Těleso pumpy  
BC 002-1

Piston / Pist for Options BC002-A-1, BC002-A-2, BC002-B  
BC 002-2 (with M6 external thread)

Piston / Pist for Options BC002-C  
BC 003-2 (with M6 internal thread)

Master cylinder plug / Zátka pumpy  
BC 001-3

Spring / Pružina  
BC 002-5

Piston cup / Manžeta Øx 12,5 mm  
2x 90-50008

Bleeding screw / Odvzdušňovací šroub M6  
50-5042

Screw / Šroub M10x1  
2 x 50-5008

Lock ring / Pojistný kroužek  
Ø 17 mm

Sealing O-ring / Těsnící O-kroužek  
Øx 13 x 2,5 mm

Sealing O-ring / Těsnící O-kroužek  
Øx 10 x 1,78 mm

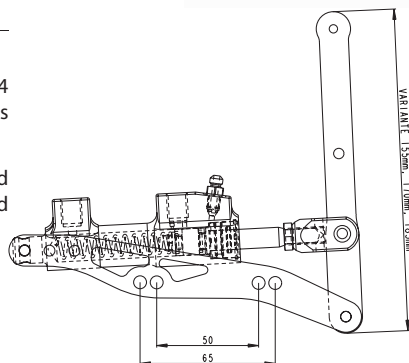
Caliper / Třmen  
BC 001-4

Nut / Matice  
BC 001-4-5095

Pin / Čep 8 mm  
BC 001-4-820008

Cotter / Závlačka  
BC 001-4-830015

Shim / Podložka  
BC 001-4-5094



- Compatible with mineral hydraulic brake fluid (MIL) or with DOT.4 automotive brake fluid that is used in ultralight aircrafts and it is also commonly used in automotive industry

- ATTENTION!** Each brake fluid requires sealing materials and these mustn't be mixed up! It is essential to specify brake fluid type while placing the order.

**Master cylinder**

**BC 003**

**Part No. BC 003-A-1-D**

**Part No. BC 003-A-2-D**

**Part No. BC 003-B-1-D**

**Part No. BC 003-B-2-D**

**Part No. BC 003-C-D**

**Part No. BC 003-A-1-E**

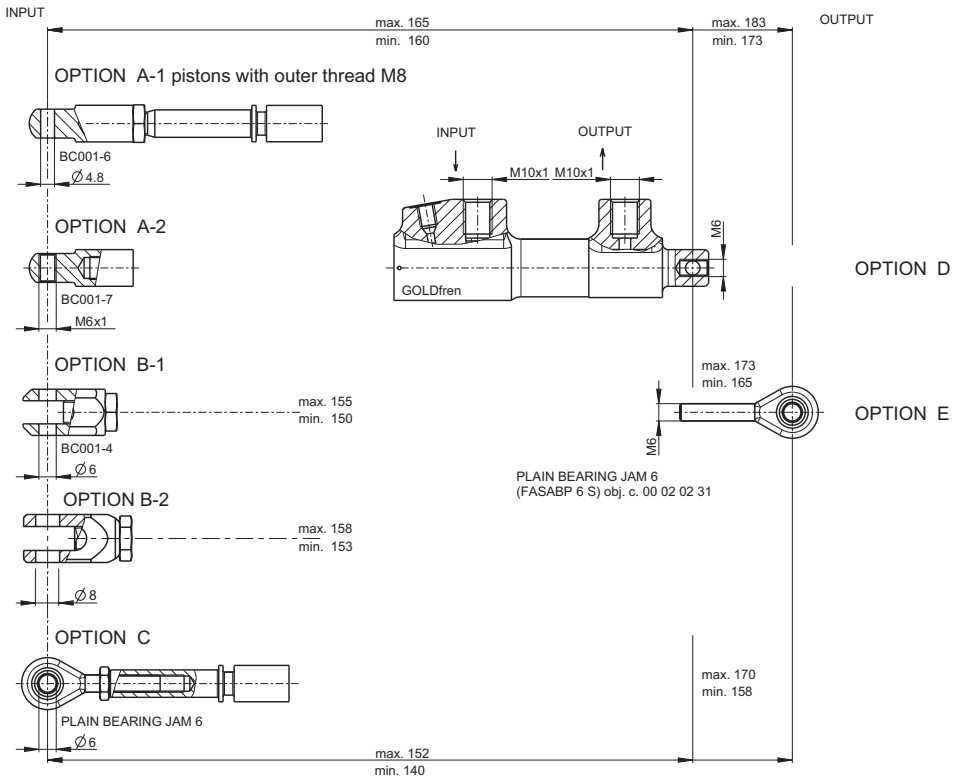
**Part No. BC 003-A-2-E**

**Part No. BC 003-B-1-E**

**Part No. BC 003-B-2-E**

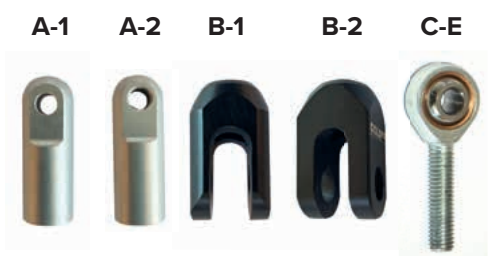
**Part No. BC 003-C-E**

BC 003



**Technical Characteristics**

Construction Material	CNC Aluminium
Brake Fluid	DOT.4 or MIL
Finishing	Colour Anodizing
Weight of the cylinder	165 g (with pin)
Hardware	Steel
Max pressure	



**Master cylinders**

## 4

### Accessories for GOLDfren master cylinder BC 003

Master cylinder body / Těleso pumpy  
BC 003-1

Piston / Pist for options BC003-A-1-D, BC003-A-1-E, BC003-A-2-D,  
BC003-A-2-E, BC003-B-D, BC003-B-E  
BC 002-2 (with M6 external thread)

Piston / Pist for options BC003-C-D, BC003-C-E  
BC 003-2 (with M6 internal thread)

Master cylinder plug / Zátka pumpy  
BC 001-3

Spring / Pružina  
BC 002-5

Piston cup / Manžeta Øx 12,5 mm  
2x 90-50008

Bleeding screw / Odvzdušňovací šroub M6  
50-5042

Screw / Šroub M10x1  
2 x 50-5008

Lock ring / Pojistný kroužek  
Ø 17 mm

Sealing O-ring / Těsnící O-kroužek  
Øx 13 x 2,5 mm

Sealing O-ring / Těsnící O-kroužek  
Øx 10 x 1,78 mm

Caliper / Třmen  
BC 001-4

Nut / Matice  
BC 001-4-5095

Pin / Čep 8 mm  
BC 001-4-820008

Cotter / Závlačka  
BC 001-4-830015

Shim / Podložka  
BC 001-4-5094



- Compatible with mineral hydraulic brake fluid (MIL) or with DOT.4 automotive brake fluid that is used in ultralight aircrafts and it is also commonly used in automotive industry
- **ATTENTION!** Each brake fluid requires sealing materials and these mustn't be mixed up! It is essential to specify brake fluid type while placing the order.



## Brake Valve BV 001 Part No. BV 001

### Technical Characteristics

Max Pressure	
Brake Fluid	DOT.4 or MIL
Construction material	CNC Aluminium
Finishing	Colour Anodizing
Weight of the wheel	139 g (without screws)
Hardware	Steel

### Accessories for GOLDfren brake valve

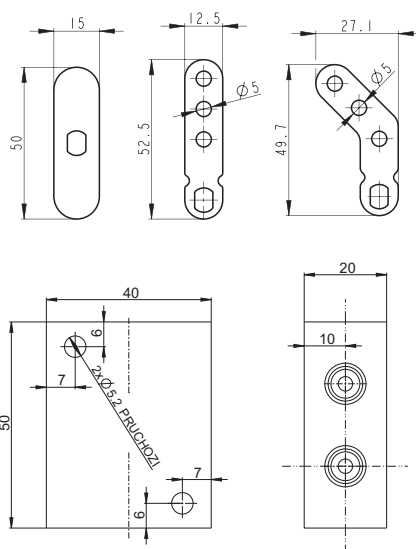
Axle-shaft / Osa - hřídel V001-10
Lever / Páka V001-6
Cup / Krytka V001-5
Screw joint / Šroubení M10x1 2 x V001-4
Piston / Pístek 2 x V001-3
Main body / Hlavní těleso brzdy V001-1
Shim / Podložka 2 x Ø 10 mm
Spring / Pružina 0.5x4.5x10 2 x 90-15-5031
Sealing O-ring / Těsnící O-kroužek 2 x Ø 3 x 1.5
Pin / Kolík 2 x 4x10
Screw / Šroub M4x6 90-15-5032
Lock ring / Pojistný kroužek Ø 10 mm
Fitting / Koncovka 2 x 5030
Fitting / Koncovka 2 x 5005
Fitting / Koncovka M10x1 2 x 5004
Fitting / Koncovka IGL M10x1 2 x 5002



5



VAR. A      VAR. B      VAR. C



Brake Valve

**5**

**Different lever variants**

Lever – form A



Lever – form B



Lever - form C



**Variant of brake valve BV001 with extension piece**

Total length including extension piece – length 81 mm x width 63 mm

Part No. BV001-S-A  
With extension + lever A



Part No. BV001-S-B  
With extension + lever B



Part No. BV001-S-C  
With extension + lever C



**Variant of brake valve BV001 without extension piece**

Shorter version without extension piece – length 58 mm x width 63 mm

Part No. BV001-B  
Only with lever B



Part No. BV001-C  
Only with lever C



**Recommended tyres size for GOLDfren wheels**

**6**

Wheel size → Tyre size ↓	200 x 50	3.50-40"	4.00-5"	5.00-5"	4.00-6"	6.00-6"
200 x 50	X					
2.80/2.50-4"		X				
3.00-4"		X				
4.00-4"		X				
11 x 4.00-5"			X			
5.00-5"				X		
380 x 150-5" (15x6.00-5")				X		
13 x 5.00-6"					X	
4.00-6"					X	
15 x 6.00-6"					X	X
6.00-6"					X	X
7.00-6"						X
8.00-6"						X
8.50-6"						X
26"						X
29"						X
31"						X

**Brake fluid and brake fluid bleeder**

**7**

**Brake fluid DOT.4**

For proper brake system using it is necessary to pay attention to the marking on the product where the suitable brake fluid is stated. Using wrong brake fluid may cause damage to the sealings and brake system malfunction.

**Order number: 90-15-5008**



**Brake fluid bleeder**

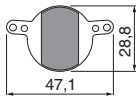
We offer a brake fluid bleeder for proper bleeding of your brake system.

**Order number: 90-03-508**



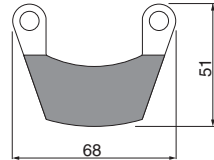
**Accessories**

**818**



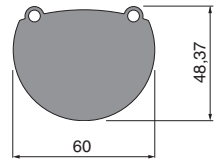
For Magura Caliper  
For Ultralight ZENAIR ZODIAC  
IKARUS C42

**900**



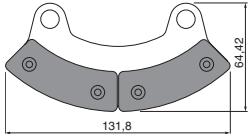
DYNAMIC, WT9, DIN 236-II, EUROSTAR, SPORTSTAR,  
HARMONY LSA

**901**



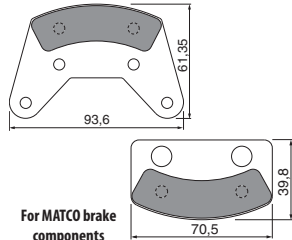
Ultralight

**903**



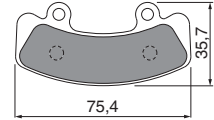
CESSNA, PIPER  
IT IS POSSIBLE TO USE SEGMENTS - TYPE 919  
2 pieces set

**904**



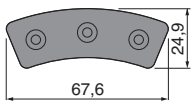
For MATCO brake  
components  
(TECNAM - P92 ECHO)

**905**



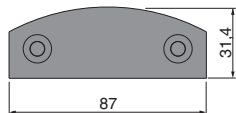
TECNAM  
Sierra RG P2002  
P96 GOLF

**906**



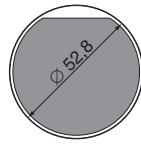
Aerofab, BEECH, CESSNA, Bellanca, DIAMOND,  
Champion, PIPER, Partenavia, UNIVAIR, Socata  
TECNAM, ZENITH - Zodiac CH 601 UL  
Compatible with brake lining: RAPCO 066-10600,  
GROVE 066-106, CLEVELAND 066-10600, Old P/N 66-  
106, 066-0200, 66-2, 066-0300, 66-3, 66-56, 66-57  
AIRBORNE 310, 311, PIPER 752-308, 752-309

**907**



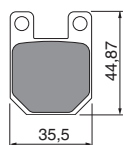
Brake pads for TRIXY AVIATION

**908**



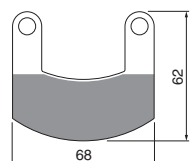
Beechcraft brake pads

**912**



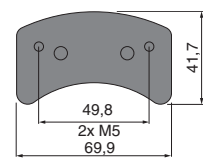
TL ULTRALIGHT  
TL-96 Star  
TL-2000 Sting  
TL-232 Condor

**913**



EUROFOX ULTRALIGHT

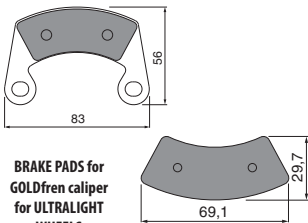
**914**



AIRCRAFT ZEPHYR

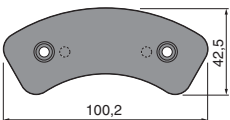
Brake Pads

**915**



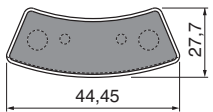
**BRAKE PADS for GOLDfren caliper for ULTRALIGHT WHEELS**

**916**



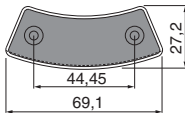
**AIRCRAFT ZLIN**

**918**



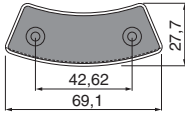
**Compatible with brake lining:**  
**RAPCO 66-109**  
**CLEVELAND 066-30026, 066-10900**  
**MCCAULEY B30026**  
**AIRBORNE 487**

**918R**



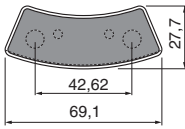
**PIPER, CESSNA with RIVETS**

**919**



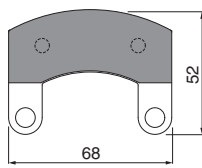
**Compatible with brake pads:**  
**RAPCO 66-105, CLEVELAND 066-10500,**  
**OLD P/N 66-105, 66-03000, 66-30, 66-55,**  
**AIRBORNE 313, BEECHCRAFT 36-8001-73, CESS-**  
**NA 66-30, PIPER 752-342**

**919R**



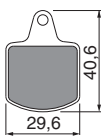
**PIPER, CESSNA with RIVETS**  
**CIRRUS S22**  
**Compatible with brake lining:**  
**RAPCO 066-06200, 66-19 (FAA-PMA)**  
**CLEVELAND 066-06200, Old P/N 66-62**

**925**



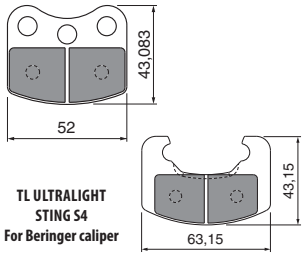
**EUROFOX WT9 DYNAMIC**

**927**



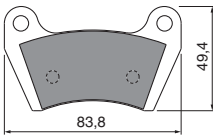
**FOR ULTRALIGHT CALIPER**

**928**



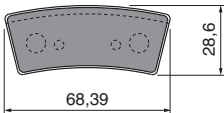
**TL ULTRALIGHT STING S4**  
**For Beringer caliper**

**929**



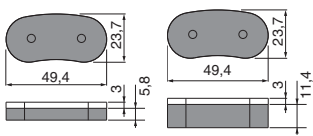
**MULTI - ROLE HELICOPTER GAZELLE**

**930R**



**COMPATIBLE WITH BRAKE LINING:**  
**CLEVELAND 066 - 04400**  
**RAPCO 066 - 04400**  
**BEECH - CESSNA**

**931**



**D027**

**932**

D027

**933**

COMPATIBLE WITH MATCO 66-106

**934**

Compatible with CLEVELAND 066-14100

**935**

Compatible with CLEVELAND 066-11100 RAPCO RA66-111 BEECH - CESSNA - MOONEY

**936**

Compatible with CLEVELAND 066-03300

**937**

Compatible with CLEVELAND 066-03600

**938**

FOR LAMBADA (AIRCOM CALIPER) SAMBA MICROLIGHT

**939**

THIS TYPE USES FRICTION SEGMENTS: 939-918 939-919 AS A COUNTERPART FOR SINGLE PISTON MATCO CALIPER

**951**

FOR BERINGER CALIPER

**952**

ROTOR BRAKE PADS FOR MTOSPORT/MT03 MOUNTED (2010) EQUIVALENTS OEM 63-51-00-C-31054

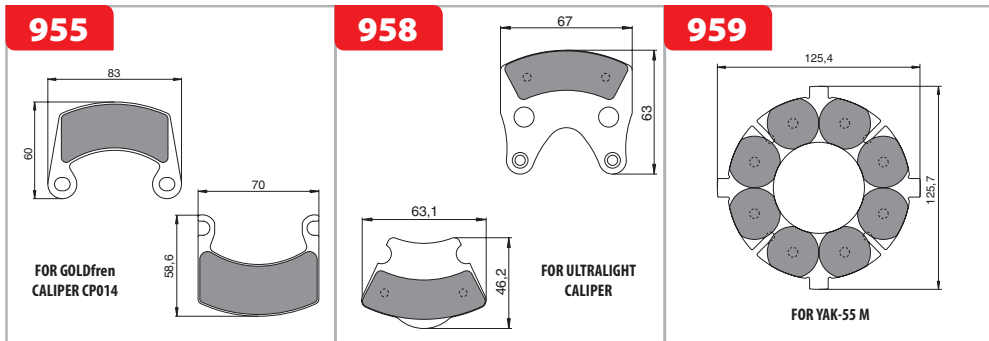
**953**

BRAKE PADS EQUIVALENTS OEM 32-40-00-S-30044

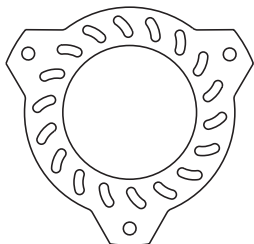
**954**

FOR BERINGER CALIPER

**Brake Pads**

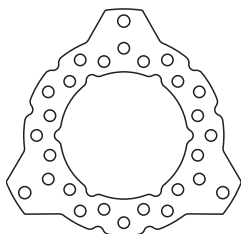


**400-505**



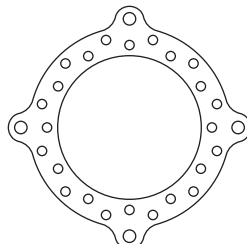
Ultralight WT9 DYNAMIC

**400-505B**



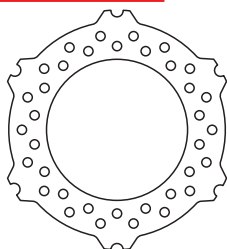
Ultralight WT9 DYNAMIC

**400-520**



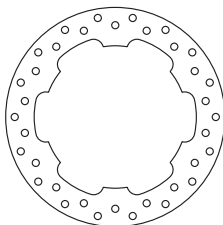
For CT SW ultralight

**400-522**



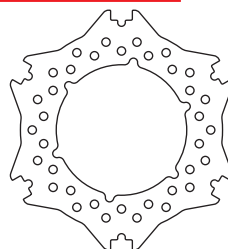
For GOLD fren ultralight wheels

**400-526**



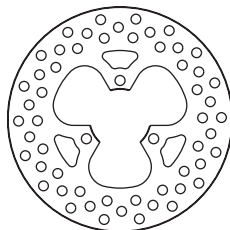
For GOLDfren wheel RIM 009

**400-527**



For GOLDfren wheel RIM 008

**429-504**



TL-3000 Sirius



**Aircraft Brake Linings - Competitor Interchange Chart**

<b>GOLDfren</b>	<b>RAPCO</b>	<b>MANUFACTURER</b>	<b>CLEVELAND</b>	<b>MATCO</b>
<b>818</b>				
<b>900</b>				
<b>901</b>				
<b>903</b>				
<b>904</b>				P/N: WHLB RL-1
<b>905</b>				
<b>906</b>	RA 066-10600	GROVE 066-106	P/N. 066-10600,Old P/N.66-106, 066- 0200, 66-2, 066- 0300, 66-3,66-56, 66-57	WHLM 66-106
<b>907</b>				
<b>908</b>				
<b>910</b>				
<b>912</b>				
<b>913</b>				
<b>914</b>				
<b>915</b>				
<b>916</b>				
<b>918</b>	RA 66-109		P/N. 066-30026, 066-10900	
<b>918 R</b>				
<b>919</b>	RA 66-105	GROVE 66-105	P/N.066-10500, Old P/N. 66-105, 66-03000, 66-30, 66-55,	
<b>919 R</b>	RA 066-06200		P/N.066-06200, Old P/N.66-62	
<b>924</b>				
<b>925</b>				



**Aircraft Brake Linings - Competitor Interchange Chart**

<b>GOLDfren</b>	<b>RAPCO</b>	<b>MANUFACTURER</b>	<b>CLEVELAND</b>	<b>MATCO</b>
926				
927				
928			P/N. PQT 003(A), 004(A)	ZEA 01
929				
930	RA 066-04400		P/N. 066-04400	
931				
932				
933				
934			P/N.066-14100	
935			P/N.066-11100	
936	RA 66-33		P/N.066-03300	
937			P/N.066-03600	
938				
939				for single piston MATCO caliper
951		for Beringer	P/N.PQT - 010 (A)	
952		63-51-00-C- 31054		
953		32-40-00-S- 30044		
954		for Beringer		
955		for GOLDfren		
956				
957				
958				
959		for YAK-55-M		

# BRAKE COMPONENTS

**GOLDfren brake components** are dedicated to ultralight aircrafts. Their brake efficiency markedly exceeds the OEM brake components performance and by this they assure not only greater safety but also landing on the shortest runway. **GOLDfren** brake lining is made of sintered materials and does not contain dangerous asbestos or lead. Brake linings material compositions do not cause excessive brake disc wear.

We recommend using our brake pads along with **GOLDfren brake discs**. **GOLDfren brake discs** are made of high quality stainless steel which is resistant to high load and contrary weather conditions.

With **GOLDfren brake components**, you can reach high quality and perfect braking performance for reasonable price!



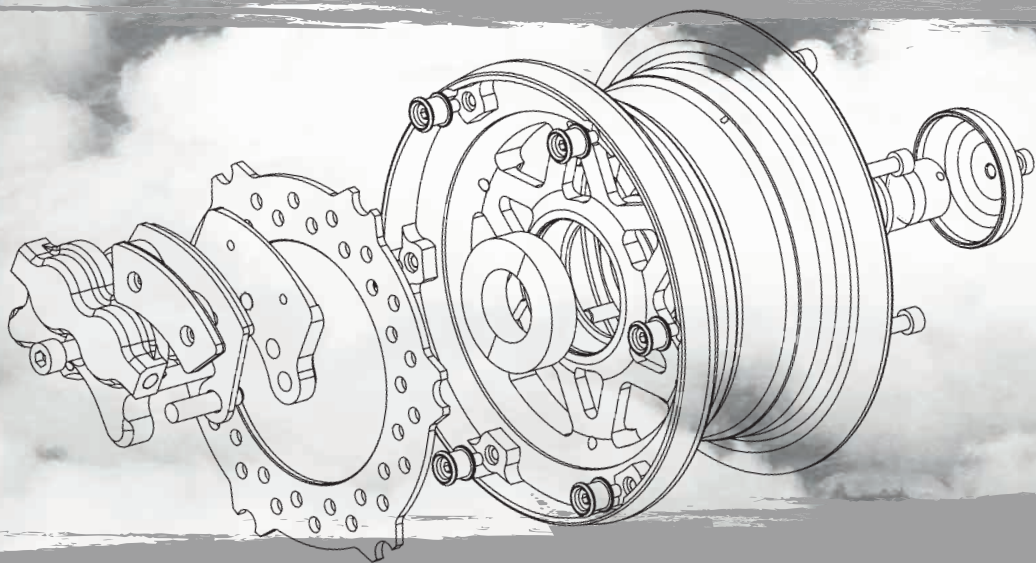
*Pads production in our factory*





EUROPEAN UNION  
European Regional Development Fund  
Operational Programme Enterprise  
and Innovations for Competitiveness

*Best quality brake components*



[www.goldfren.com](http://www.goldfren.com)

SPACEK PRODUCT  
Poběžovice 29, 534 01 Holice  
Czech Republic  
Tel.: +420 466 682 065  
Tel.: +420 466 009 452  
Fax: +420 466 682 027  
E-mail: [goldfren@goldfren.com](mailto:goldfren@goldfren.com)